



Designed:	EEC
Drawn:	EEC
Checked:	MLR
Edit:	11-15-2017

Title:	50036 - OLD BASTROP HWY AT SAN MARCOS RIVER SITE AERIAL VIEW
Filepath:	P:\A637 Hays County TX Low Water Crossing System\AutoCADAS BUILT\FLASHERS\50036 - OLD BASTROP HWY AT SAN MARCOS RIVER\50036 - OLD BASTROP HWY.dwg

Scale:	NOT TO SCALE
Copy:	AS BUILT

Project No:	A637
Drawing:	1

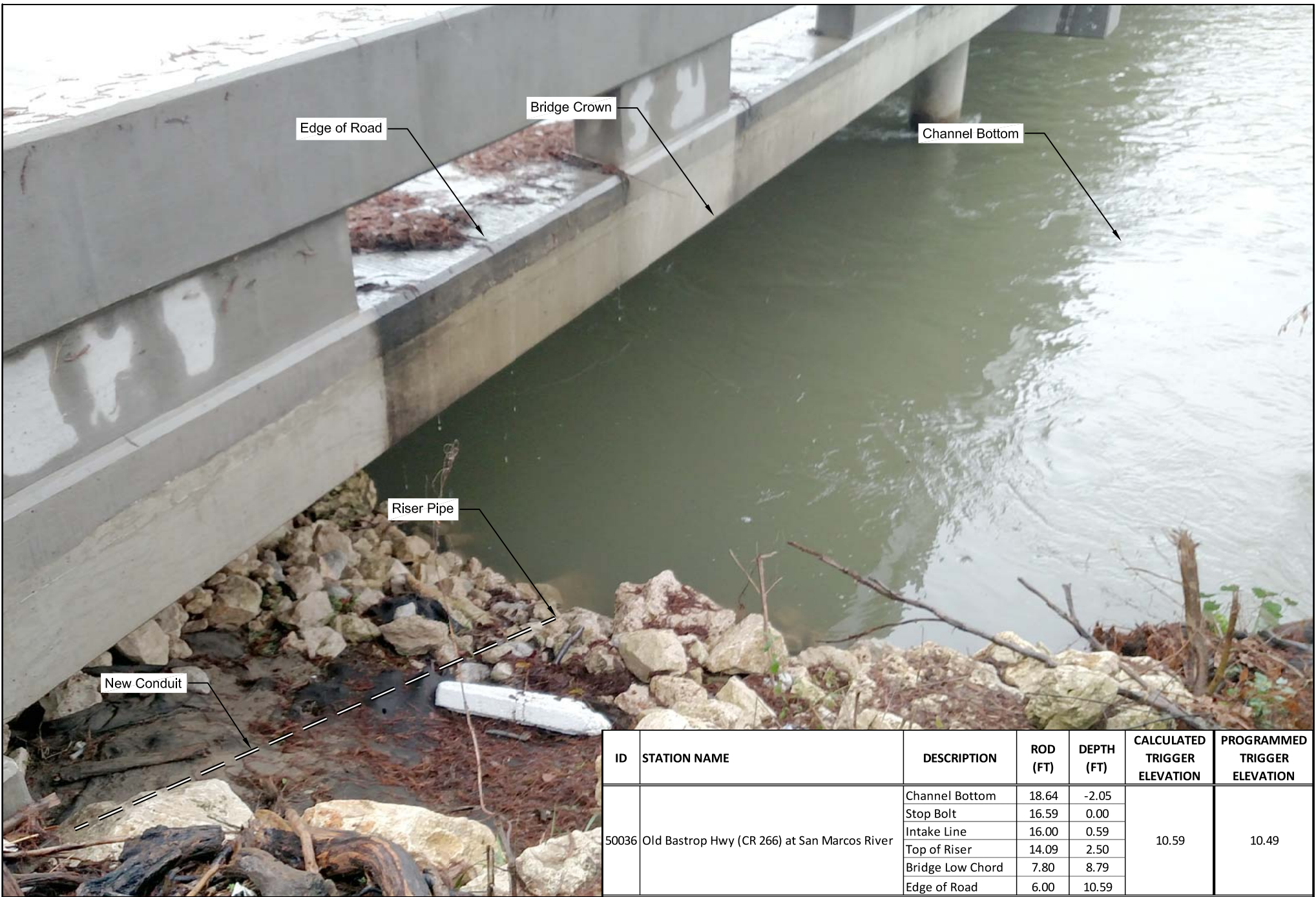


Designed: EEC
 Drawn: EEC
 Checked: MLR
 Edit: 11-15-2017

Title: 50036 - OLD BASTROP HWY AT SAN MARCOS RIVER MASTER & RISER AERIAL VIEW
 Filepath: P:\A637 Hays County TX Low Water Crossing System\AutoCAD\AS BUILT\FLASHERS\50036 - OLD BASTROP HWY AT SAN MARCOS RIVER\50036 - OLD BASTROP HWY.dwg

Scale: NOT TO SCALE
 Copy: AS BUILT

Project No: A637
 Drawing: 2



ID	STATION NAME	DESCRIPTION	ROD (FT)	DEPTH (FT)	CALCULATED TRIGGER ELEVATION	PROGRAMMED TRIGGER ELEVATION
50036	Old Bastrop Hwy (CR 266) at San Marcos River	Channel Bottom	18.64	-2.05	10.59	10.49
		Stop Bolt	16.59	0.00		
		Intake Line	16.00	0.59		
		Top of Riser	14.09	2.50		
		Bridge Low Chord	7.80	8.79		
		Edge of Road	6.00	10.59		



Designed: EEC
 Drawn: EEC
 Checked: MLR
 Edit: 11-15-2017

Title: 50036 - OLD BASTROP HWY AT SAN MARCOS RIVER SURVEY DETAILS
 Filepath: P:\A637 Hays County TX Low Water Crossing System\AutoCADAS BUILT\FLASHERS\50036 - OLD BASTROP HWY AT SAN MARCOS RIVER\50036 - OLD BASTROP HWY.dwg

Scale: NOT TO SCALE
 Copy: AS BUILT

Project No: A637
 Drawing: 3



Designed:	EEC
Drawn:	EEC
Checked:	MLR
Edt:	11-15-2017

Title:	50036 - OLD BASTROP HWY AT SAN MARCOS RIVER RISER PIPE DETAILS
Filepath:	P:\A637 Hays County TX Low Water Crossing System\AutoCADAS BUILT\FLASHERS\50036 - OLD BASTROP HWY AT SAN MARCOS RIVER\50036 - OLD BASTROP HWY.dwg

Scale:	NOT TO SCALE
Copy:	AS BUILT

Project No:	A637
Drawing:	4



Designed:	EEC
Drawn:	EEC
Checked:	MLR
Edit:	11-15-2017

Title:	50036 - OLD BASTROP HWY AT SAN MARCOS RIVER CONDUIT DETAILS #1
Filepath:	P:\A637 Hays County TX Low Water Crossing System\AutoCADAS BUILT\FLASHERS\50036 - OLD BASTROP HWY AT SAN MARCOS RIVER\50036 - OLD BASTROP HWY.dwg

Scale:	NOT TO SCALE
Copy:	AS BUILT

Project No:	A637
Drawing:	5



New Conduit



Designed:	EEC
Drawn:	EEC
Checked:	MLR
Edt:	11-15-2017

Title:	50036 - OLD BASTROP HWY AT SAN MARCOS RIVER CONDUIT DETAILS #2
Filepath:	P:\A637 Hays County TX Low Water Crossing System\AutoCADAS BUILT\FLASHERS\50036 - OLD BASTROP HWY AT SAN MARCOS RIVER\50036 - OLD BASTROP HWY.dwg

Scale:	NOT TO SCALE
Copy:	AS BUILT

Project No:	A637
Drawing:	6



New Conduit



Designed: EEC	Title: 50036 - OLD BASTROP HWY AT SAN MARCOS RIVER CONDUIT DETAILS #3	Scale: NOT TO SCALE	Project No: A637
Drawn: EEC		Copy: AS BUILT	Drawing: 7
Checked: MLR			
Edit: 11-15-2017		Filepath: P:\A637 Hays County TX Low Water Crossing System\AutoCAD\AS BUILT\FLASHERS\50036 - OLD BASTROP HWY AT SAN MARCOS RIVER\50036 - OLD BASTROP HWY.dwg	



Designed: EEC
 Drawn: EEC
 Checked: MLR
 Edit: 11-15-2017

Title: 50036 - OLD BASTROP HWY AT
 SAN MARCOS RIVER
 CONDUIT DETAILS #4
 Filepath: P:\A637 Hays County TX Low Water Crossing System\AutoCADAS BUILT\FLASHERS\50036 - OLD BASTROP HWY AT SAN MARCOS RIVER\50036 - OLD BASTROP HWY.dwg

Scale: NOT TO SCALE
 Copy: AS BUILT

Project No: A637
 Drawing: 8

