



Designed:	EEC
Drawn:	EEC
Checked:	MLR
Edit:	1-9-2018

Title:	50023 - LIME KILN RD AT SINK CREEK SITE AERIAL VIEW
	Filepath: P:\A637 Hays County TX Low Water Crossing System\AutoCADAS BUILT\FLASHERS\50023 - LIME KILN AT SINK CREEK\50023 - LIME KILN.dwg

Scale:	NOT TO SCALE
Copy:	AS BUILT

Project No:	A637
Drawing:	1

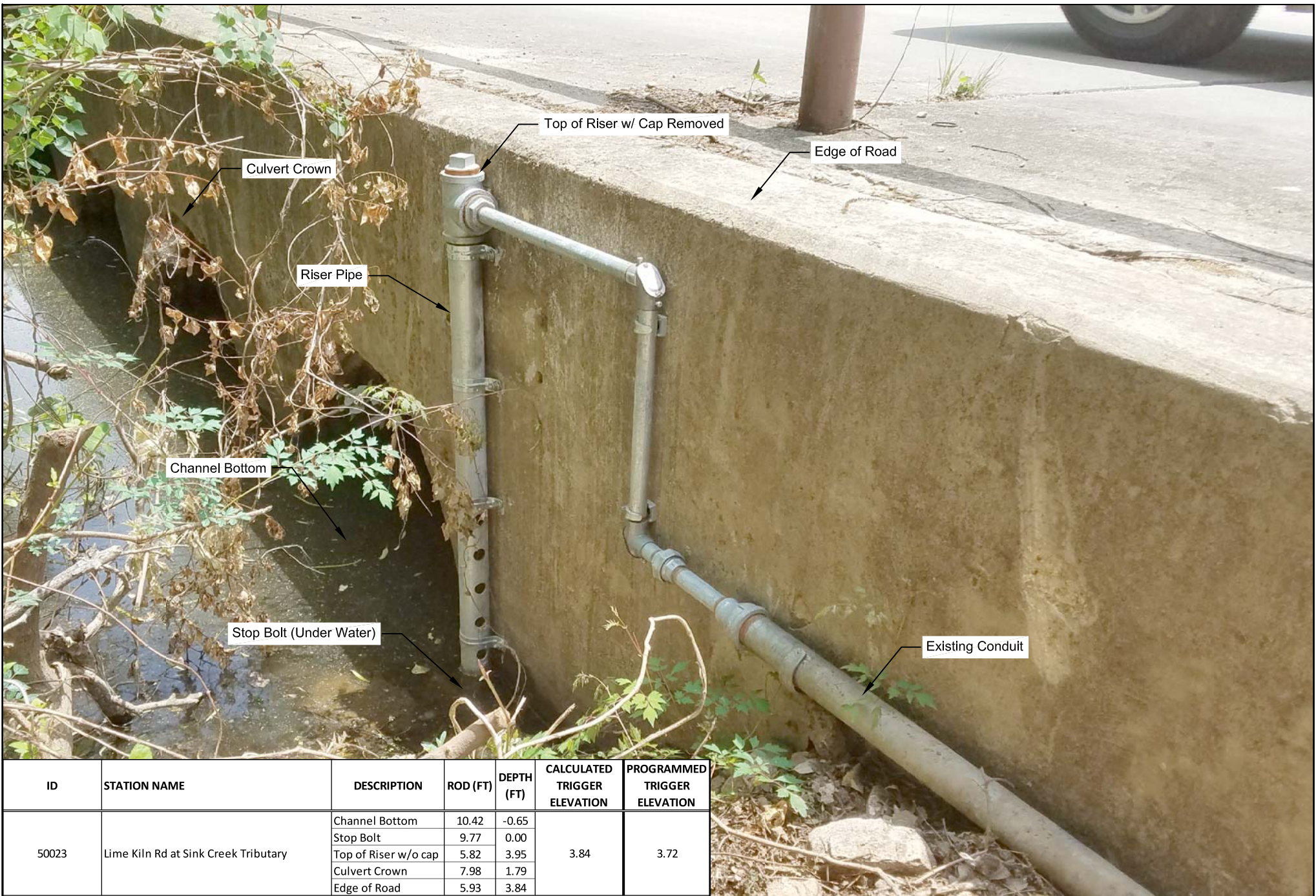


Designed:	EEC
Drawn:	EEC
Checked:	MLR
Edit:	1-9-2018

Title:	50023 - LIME KILN RD AT SINK CREEK MASTER AERIAL VIEW
Filepath:	P:\A637 Hays County TX Low Water Crossing System\AutoCAD\AS BUILT\FLASHERS\50023 - LIME KILN AT SINK CREEK\50023 - LIME KILN.dwg

Scale:	NOT TO SCALE
Copy:	AS BUILT

Project No:	A637
Drawing:	2



ID	STATION NAME	DESCRIPTION	ROD (FT)	DEPTH (FT)	CALCULATED TRIGGER ELEVATION	PROGRAMMED TRIGGER ELEVATION
50023	Lime Kiln Rd at Sink Creek Tributary	Channel Bottom	10.42	-0.65	3.84	3.72
		Stop Bolt	9.77	0.00		
		Top of Riser w/o cap	5.82	3.95		
		Culvert Crown	7.98	1.79		
		Edge of Road	5.93	3.84		

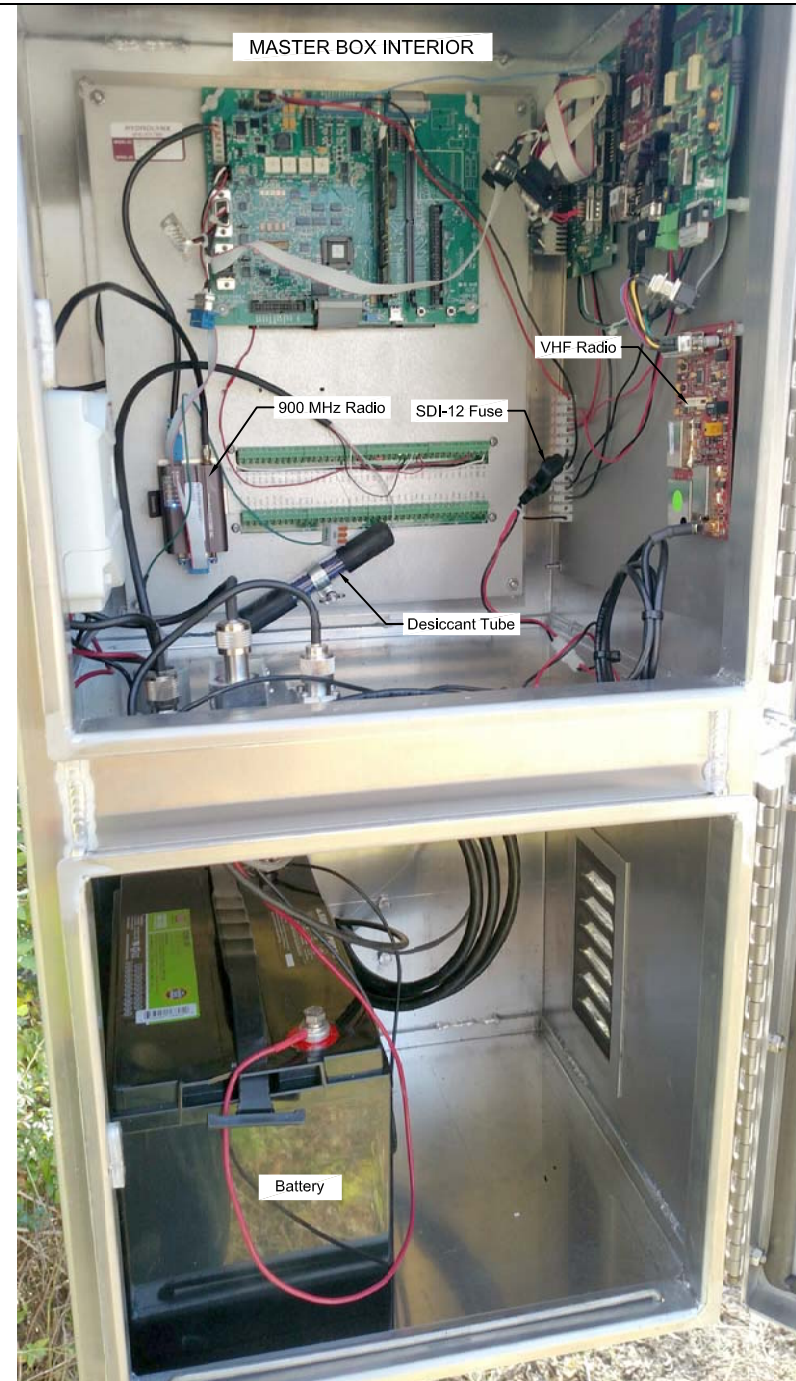
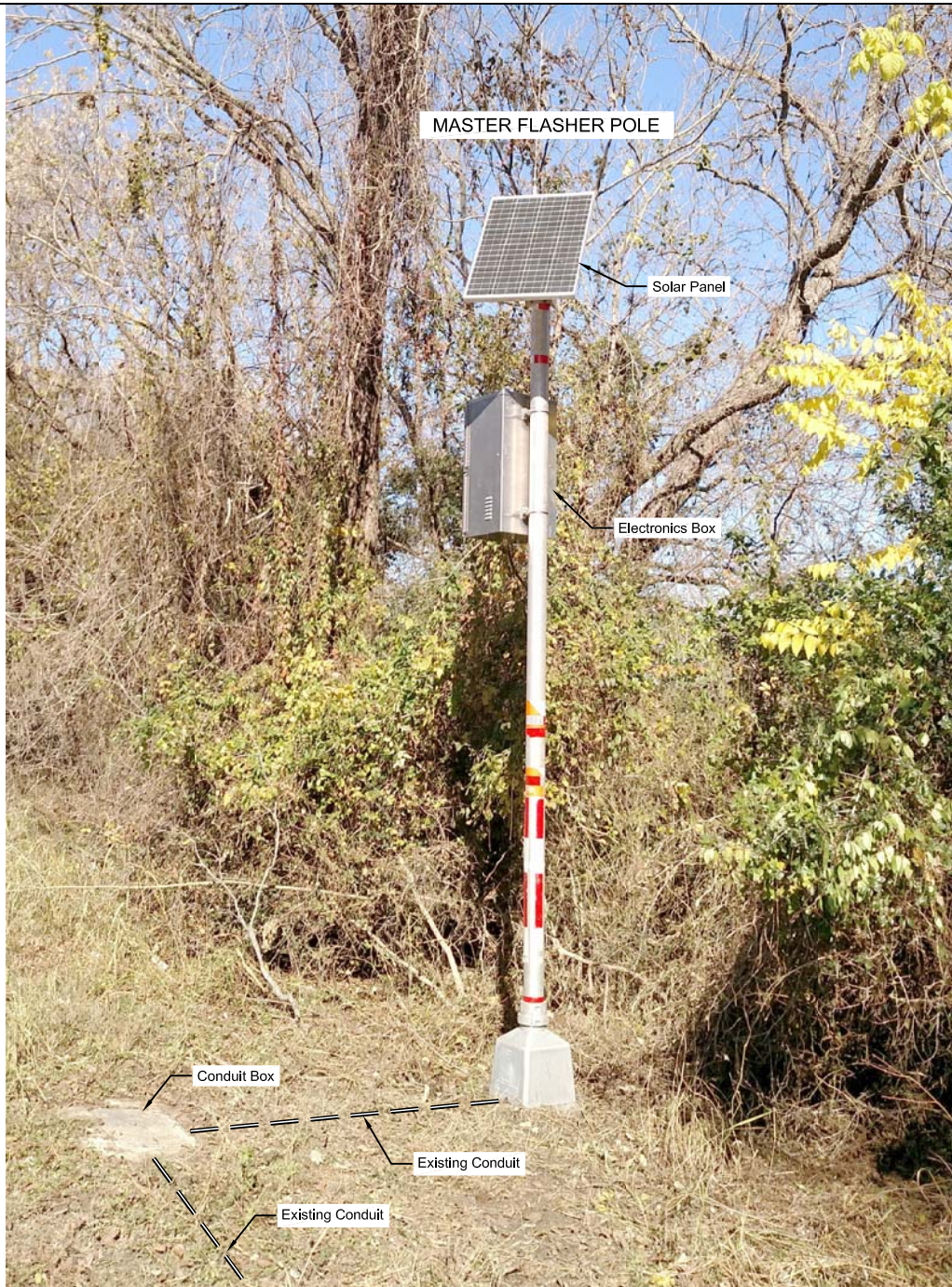


Designed:	EEC
Drawn:	EEC
Checked:	MLR
Edt:	1-9-2018

Title:	50023 - LIME KILN RD AT SINK CREEK SURVEY & RISER DETAIL
Filepath:	P:\A637 Hays County TX Low Water Crossing System\AutoCAD\AS BUILT\FLASHERS\50023 - LIME KILN AT SINK CREEK\50023 - LIME KILN.dwg

Scale:	NOT TO SCALE
Copy:	AS BUILT

Project No:	A637
Drawing:	3



Designed:	EEC
Drawn:	EEC
Checked:	MLR
Edit:	1-9-2018

Title:	50023 - LIME KILN RD AT SINK CREEK MASTER DETAILS
	Filepath: P:\A637 Hays County TX Low Water Crossing System\AutoCADAS BUILT\FLASHERS\50023 - LIME KILN AT SINK CREEK\50023 - LIME KILN.dwg

Scale:	NOT TO SCALE
Copy:	AS BUILT

Project No:	A637
Drawing:	4

Solar Panel  
 SLAVE 1 FLASHER POLE

LED Light

Electronics Box  
 (behind sign)

Tipping Bucket

LED Light

Standpipe

SLAVE 1 FLASHER BOX INTERIOR

Flasher Relay

Solar Regulator

Control Relay

Manual Switch

900 MHz Radio

Battery 1

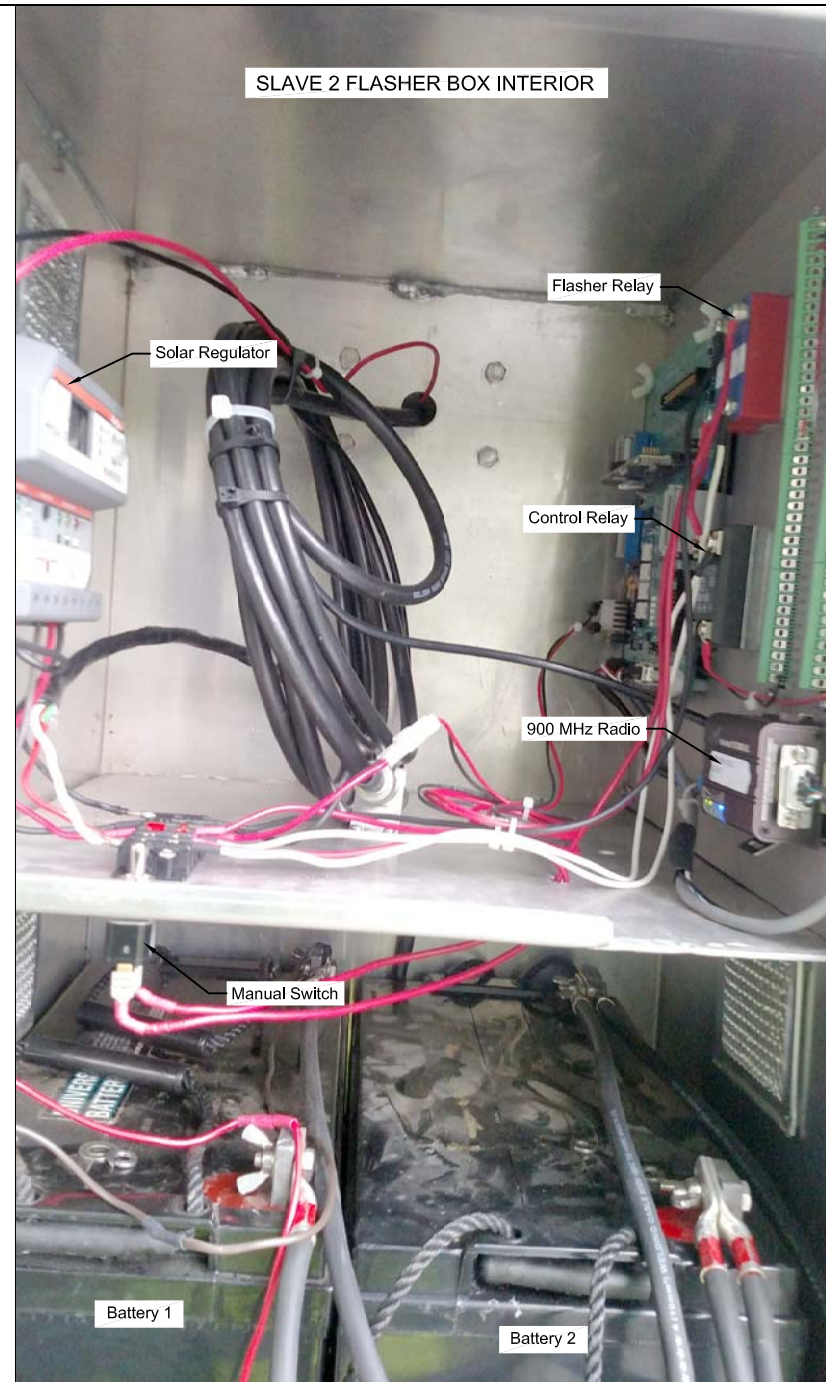


Designed: EEC  
 Drawn: EEC  
 Checked: MLR  
 Edit: 1-9-2018

Title: 50023 - LIME KILN RD AT SINK CREEK  
 SLAVE 1 FLASHER DETAIL  
 Filepath: P:\A637 Hays County TX Low Water Crossing System\AutoCAD\AS BUILT\FLASHERS\50023 - LIME KILN AT SINK CREEK\50023 - LIME KILN.dwg

Scale: NOT TO SCALE  
 Copy: AS BUILT

Project No: A637  
 Drawing: 5



Designed:	EEC
Drawn:	EEC
Checked:	MLR
Edt:	1-9-2018

Title:	50023 - LIME KILN RD AT SINK CREEK
	SLAVE 2 FLASHER DETAIL
Filepath:	P:\A637 Hays County TX Low Water Crossing System\AutoCADAS BUILT\FLASHERS\50023 - LIME KILN AT SINK CREEK\50023 - LIME KILN.dwg

Scale:	NOT TO SCALE
Copy:	AS BUILT

Project No:	A637
Drawing:	6